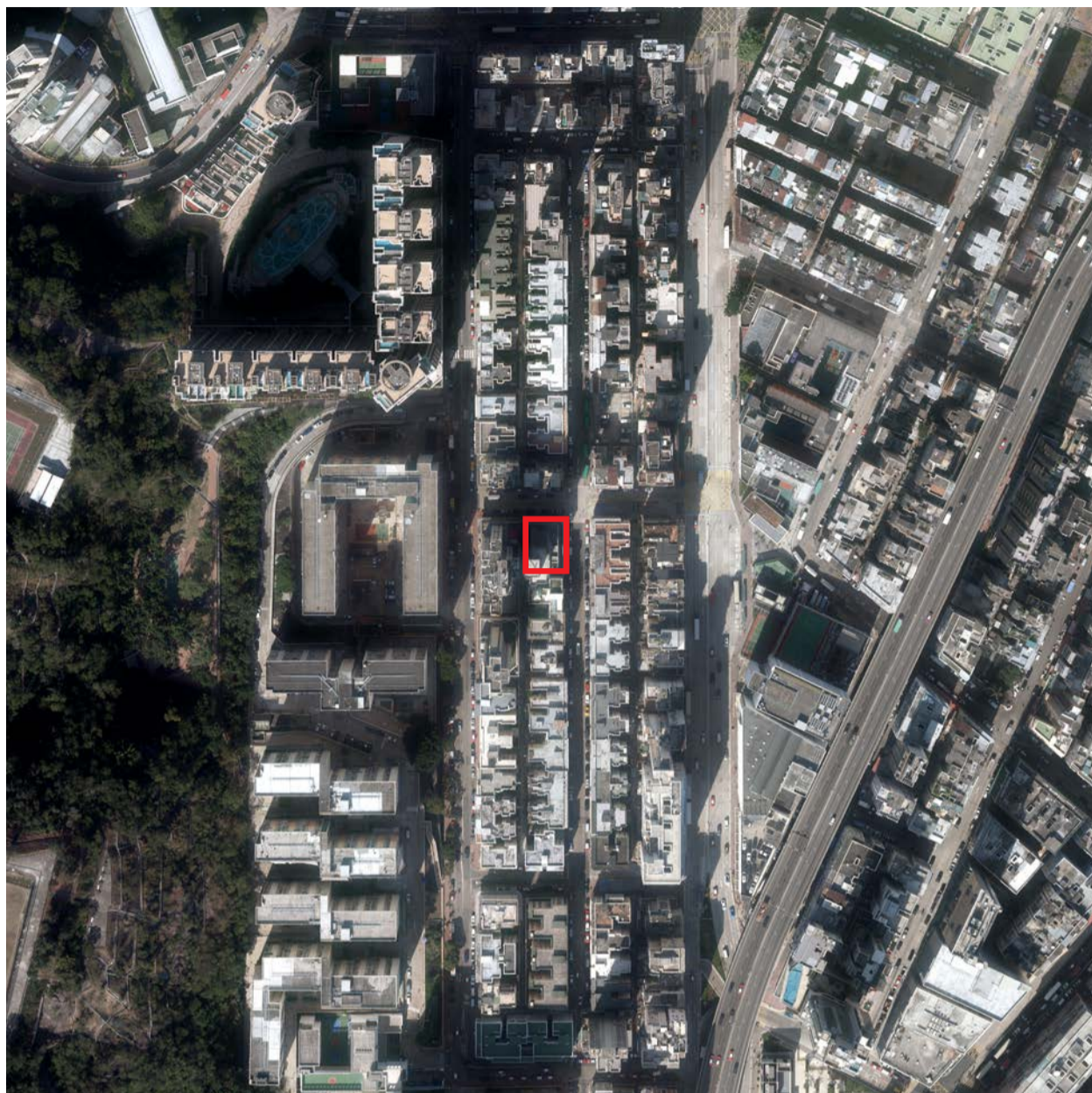



Adopted from part of the aerial photo, Photo No. E117766C, dated 7 December 2020, taken by the Survey and Mapping Office, Lands Department, The Government of the Hong Kong Special Administrative Region at a flying height of 6900 feet.

摘錄自香港特別行政區政府地政總署測繪處於7/12/2020在6900呎飛行高度拍攝之鳥瞰照片，照片編號為E117766C。



 boundary of the Development
發展項目的界線

Remark:

1. Survey and Mapping Office, Lands Department, The Government of HKSAR
© Copyright reserved – reproduction by permission only.
2. Due to technical reasons (such as the shape of Development), the Aerial Photograph has shown more than the area required under the Residential Properties (First-hand Sales) Ordinance.

備註：

1. 香港特別行政區政府地政總署測繪處©版權所有，未經許可，不得翻印。
2. 因技術原因(例如發展項目之形狀)，鳥瞰照片所顯示之範圍多於《一手住宅物業銷售條例》所要求者。